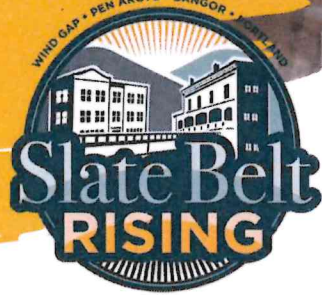


SLATE BELT RISING



RESIDENTIAL AND COMMERCIAL FAÇADE IMPROVEMENT PROGRAM

The Residential and Commercial Façade Improvement Programs are designed to help improve the exterior appearance and condition of residential and commercial properties within the four boroughs. The program's goals are to maintain historical and architectural integrity, improve neighborhood appearance, and help property owners make exterior repairs to their homes or businesses while increasing property values for all borough residents.



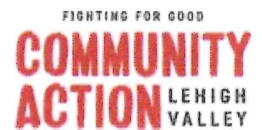
ABOUT SLATE BELT RISING

Slate Belt Rising is a neighborhood revitalization initiative designed to integrate and capitalize on the substantial assets of the individual Slate Belt boroughs of Wind Gap, Pen Argyl, Bangor, and Portland. While Slate Belt Rising specifically targets these four boroughs, some initiatives promote development and coordination of services throughout the entire region.

More information is available on our website under the Services tab, including program guidelines and applications Visit slatebeltrising.org.

PROGRAM OF COMMUNITY ACTION

Community Action Lehigh Valley is an anti-poverty non-profit offering programs and services in Advocacy, Business Start-Up and Development, Food Access and Nutrition, Housing, Neighborhood Revitalization, and Youth.



Contact Brian Fenstermaker at bfenstermaker@aclv.org
or 484-523-0900 with any questions.



COMMERCIAL FAÇADE IMPROVEMENT PROGRAM

BEFORE



AFTER

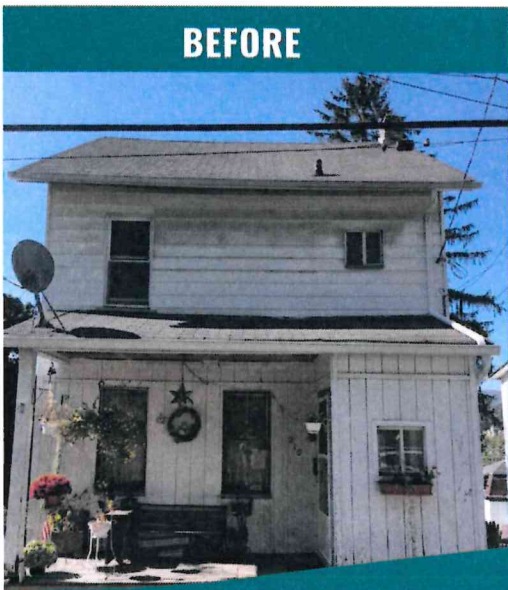


THANK YOU TO OUR SPONSORS

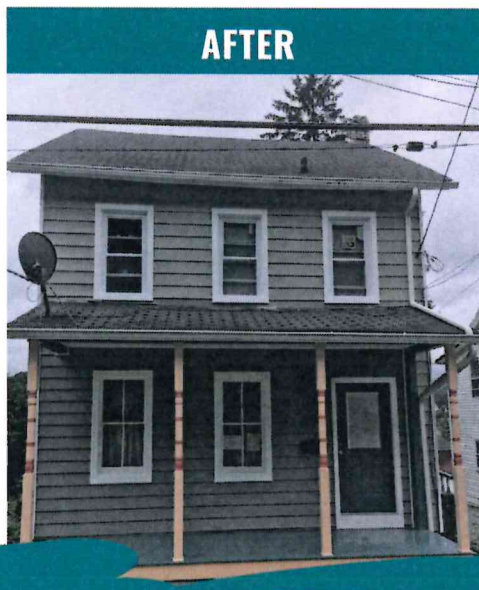


RESIDENTIAL FAÇADE IMPROVEMENT PROGRAM

BEFORE



AFTER



www.slatebeltrising.org
@slatebeltrising

197 Pennsylvania Avenue
Bangor, PA 18013

(484) 523-0900